



BROMBAL



PORTFOLIO_01

THE
WORLD'S
FIRST
LUXURY
THERMALLY
BROKEN
METAL
WINDOWS
& DOORS



The greatest challenges are often the most rewarding.

Building openings play a complex role by blurring the lines between the indoors and outdoors, while simultaneously creating a barrier of adequate protection. Unique projects call for unique openings, and Brombal is up for the challenge. Discover freedom to create.



Discover Freedom to Create

Four beautiful metals and countless design options open the door to projects without boundaries. Our luxurious metals include stainless steel, brass, corten, and galvanized steel. Beauty will only get you so far, which is why Brombal units are all thermally broken and tested to meet the highest performance standards in the world.

Architects discover the flexibility in working with us, building professionals discover the full range of our dedicated services, and the homeowners discover the unique old-world craftsmanship that sets Brombal apart. We invite you to come and Discover freedom to create.



Made in Italy.
Utilized throughout the world.

The quality of world renown Italian craftsmanship coupled with the highest technical standards, has resulted in Pietro Brombal's 50+ years in business. With the headquarters in Italy and offices on 3 continents, Brombal's success translates into experience you can trust. Our clients shop the world for products that represent the best in value and unparalleled quality.



HUMBLE BEGINNINGS

The owner Pietro Brombal has devoted his entire life to building metal windows and doors, working as a metal craftsman from the age of 14. Living in Italy, he realized that Venice's early buildings required a complex yet extraordinary steel and bronze fenestration solution worthy of such renowned buildings. By 1970, Pietro opened his own shop to create an improved luxury fenestration product - Brombal. Located in Altivole, the shop's original site remains the Brombal headquarters today.

GLOBAL EXPANSION

The Brombal family follows Pietro's footsteps by working without boundaries to design and build exquisite openings. Sons Leonardo and Pierpaolo play integral roles as the production manager and sales manager. 2011, partners were added to oversee the North American market under Brombal USA. Domenick Siano, William Polinsky, and David Behan

became partners. They ensure superior customer service for sales throughout N. America. In 2016, partners Gherardo Gambaro and Jon Begg joined the company under Brombal Oceania, overseeing sales in Australia and New Zealand.

EVERLASTING GOAL

Many years have passed since the company's humble beginnings yet the goal of Brombal remains the same - to produce the best luxury metal windows and doors in the world. Our tradition of excellence is evident and based upon a family type atmosphere. Our team is full of passionate and hardworking craftsmen who have been with the company for years. They take great pride in making these superior windows and doors by hand. Made in Italy where high quality and exquisite design reign, our culture has made us who we are today. We urge you to travel the world; learn, experience, and compare products to find the best solutions. Brombal is that best solution for luxury metal windows and doors.



CLASSIC / TRADITIONAL

index



Project: V HOUSE
Architect: Dalgliesh Gilpin Paxton Architects

p. 14



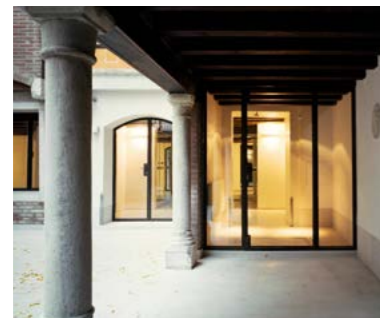
Project: GIESE
Architect: Andrew Batey

p. 20



Project: HILLSBOROUGH
Architect: Richard Beard Architects

p. 26



Project: 13th CENTURY MANSION
Architect: TA Architettura

p. 32



Project: COUNTRYSIDE HOME-STUDIO
Architect: TA Architettura

p. 38



Project: SANTA LUCIA PRESERVE
Architect: Andrew Batey

p. 44



Project: COUNTRY LUXE
Architect: Steno Sbrissa

p. 50



Project: MIDWAY FARM
Architect: Dalgliesh Gilpin Paxton Architects

p. 56



Project: OCEAN CLUB DRIVE
Architect: Thomas Thaddeus Truett

p. 60

MOUNTAIN MODERN / RUSTIC

index



Project: MOUNTAIN LIVING
Architect: JLF Architects

p. 64



Project: OWL DITCH RANCH
Architect: Carney Logan Burke

p. 70



Project: KING RESIDENCE
Architect: John Saladino

p. 76



Project: LINN RANCH
Architect: JLF Architects

p. 82



Project: ALBEMARLE BARN RESTORATION
Architect: J. Graham Goldsmith Architects

p. 88

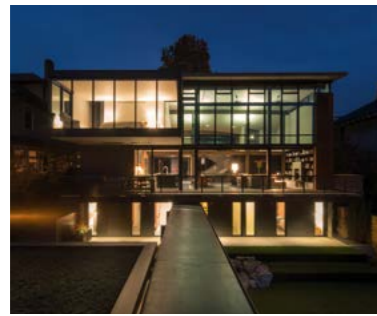


Project: LONE MOUNTAIN HIDEAWAY
Architect: JLF Architects

p. 92

MODERN / CONTEMPORARY

index



Project: MEG HOME
Architect: Olson Kundig

p. 96



Project: SARATOGA ROLLING HILLS
Architect: Louie Leu Architect

p. 102



Project: STONE COURT VILLA
Architect: Marwan Al-Sayed

p. 108



Project: GREAT FALLS
Architect: Wnuk Spurlock

p. 114



Project: VILLA GRITTI
Engineer: Ing. Cocco

p. 120



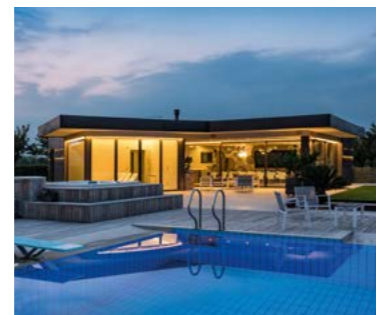
Project: CASTELFRANCO COR-TEN RESIDENCE
Architect: Studio Valente Arch.

p. 126



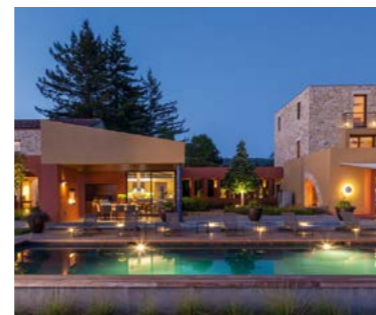
Project: VESSEL HOUSE
Architect: Vetter Denk

p. 132



Project: POOL HOUSE
Architect: Castlunger KarlHeinz - Paolo Fogal

p. 138



Project: CORRALITOS VILLA
Architect: Louie Leu Architect

p. 144

COMMERCIAL

index



Project: GALLERIE DELL'ACCADEMIA
Architect: Tobia Scarpa

p. 148



Project: MOLINO STUCKY HOTEL
Architect: Giuseppe Boccanegra

p. 154



Project: TREVISO COUNTY OFFICES
Architect: Toni Follina

p. 160



Project: PALAZZO ONIGO
Architect: Geom. Barbisan - Arch. Vendrame
Arch. Fioretti - Ing. Dalla Cia

p. 166



Project: LOKOYA WINERY
Architect: Backen, Gillam, & Kroeger Architects

p. 172

V HOUSE





Location: Virginia, USA
 Architect: Dalgliesh Gilpin Paxton Architects
 Builder: Alterra Construction Management
 Photographer: Gordon Beall
 Dealer: Steel Windows & Doors USA
Brombal Features: Burnished Brass, TDL,
 Curtain Wall, Custom Profile

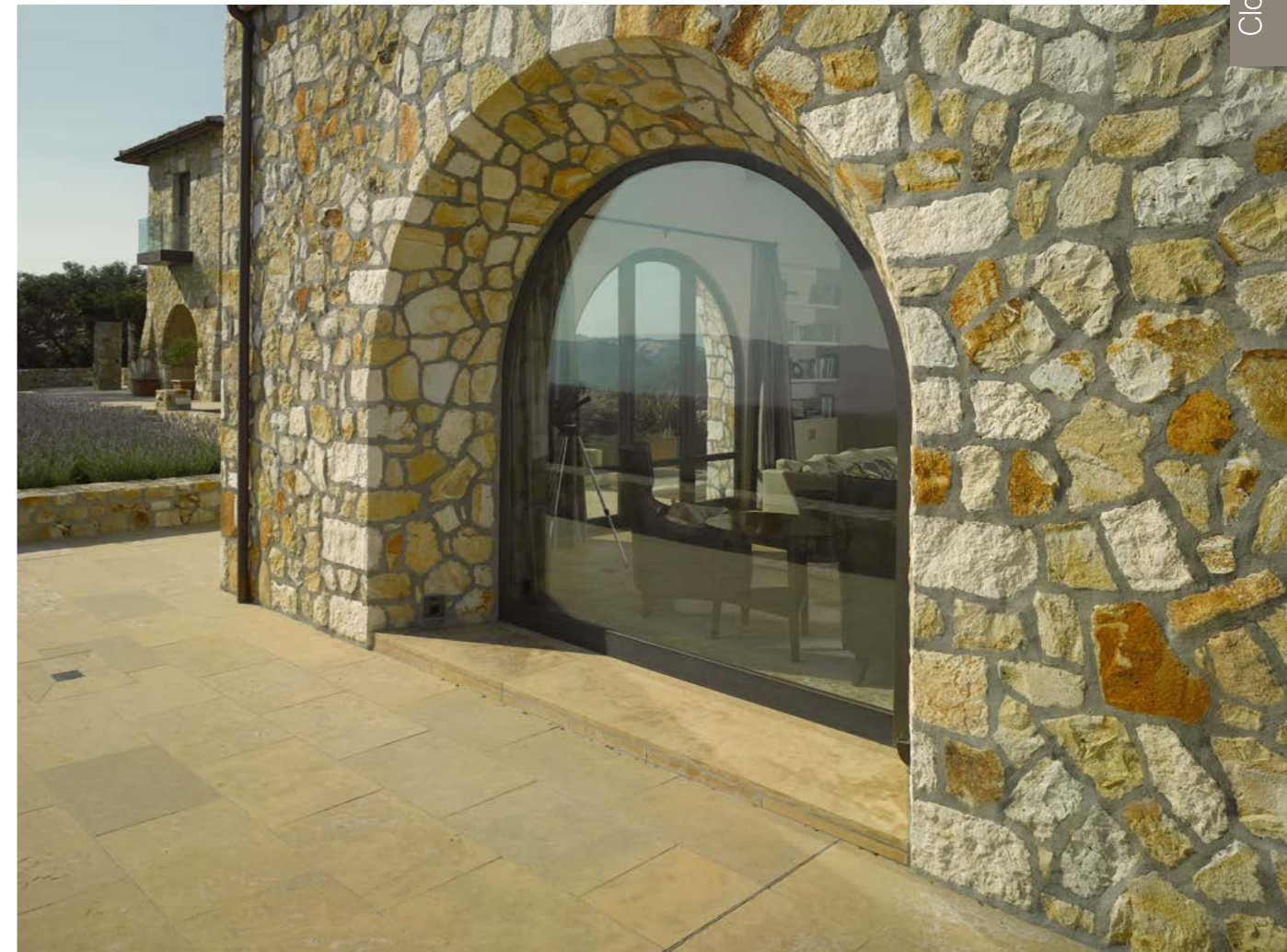




The V House is a sustainable and energy efficient villa, made to last hundreds of years. The design connects the home to its surroundings, with three buildings that are joined by curved colonnades. The two story sunroom was created with Brombal's thermally broken curtain wall system with brass cladding, that matched the brass windows and doors throughout the home. To satisfy the specific wind load and structural requirements for the jobsite, structural steel tube reinforcement was inserted into the curtain wall profiles. The bronze look was maintained throughout the home's exterior opening details, including shutters and louvers.



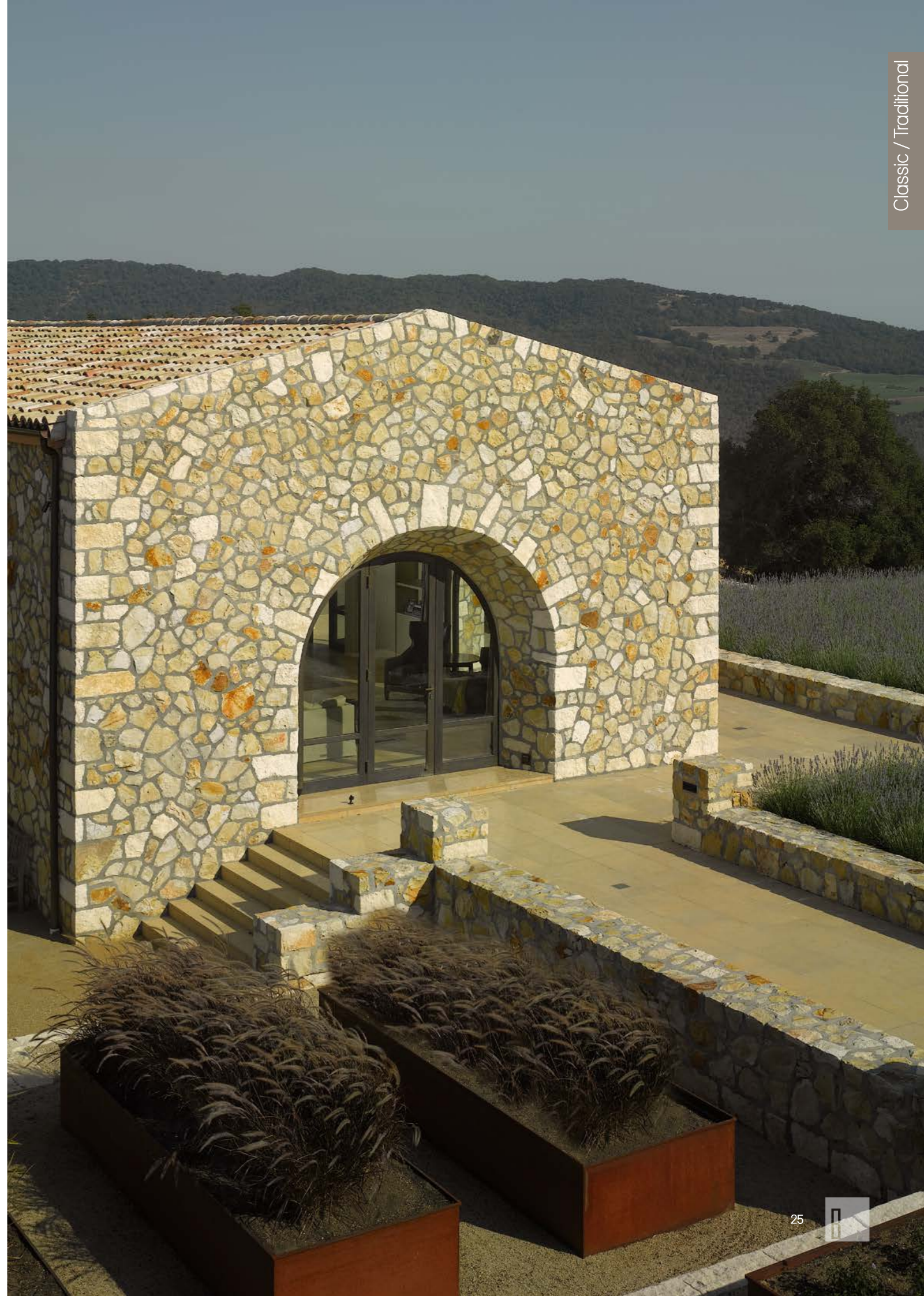




Location: California, USA
Architect: Andrew Batey
Builder: Grassi Construction
Dealer: CoorItalia
Brombal Features: Burnished Brass,
TDL, Radius Profiles



Set in Napa Valley, the Giese home combines classic country living with the beauty of the natural setting. Brombal brass windows and doors were chosen for their flexibility in design along with their striking bronze-like aesthetic. According to Cooritalia, "The windows let ample light in while framing the perfect image of the beautiful Napa countryside."



HILLSBOROUGH





Location: California, USA
 Architect: Richard Beard Architects
 Builder: Peninsula Custom Homes
 Photographer: Paul Dyer
 Dealer: Cooritalia
Brombal Features: Galvanized Steel, TDL & SDL
 Hydraulic Powered Gizmo,
 Lock-boxes, Curtain Wall



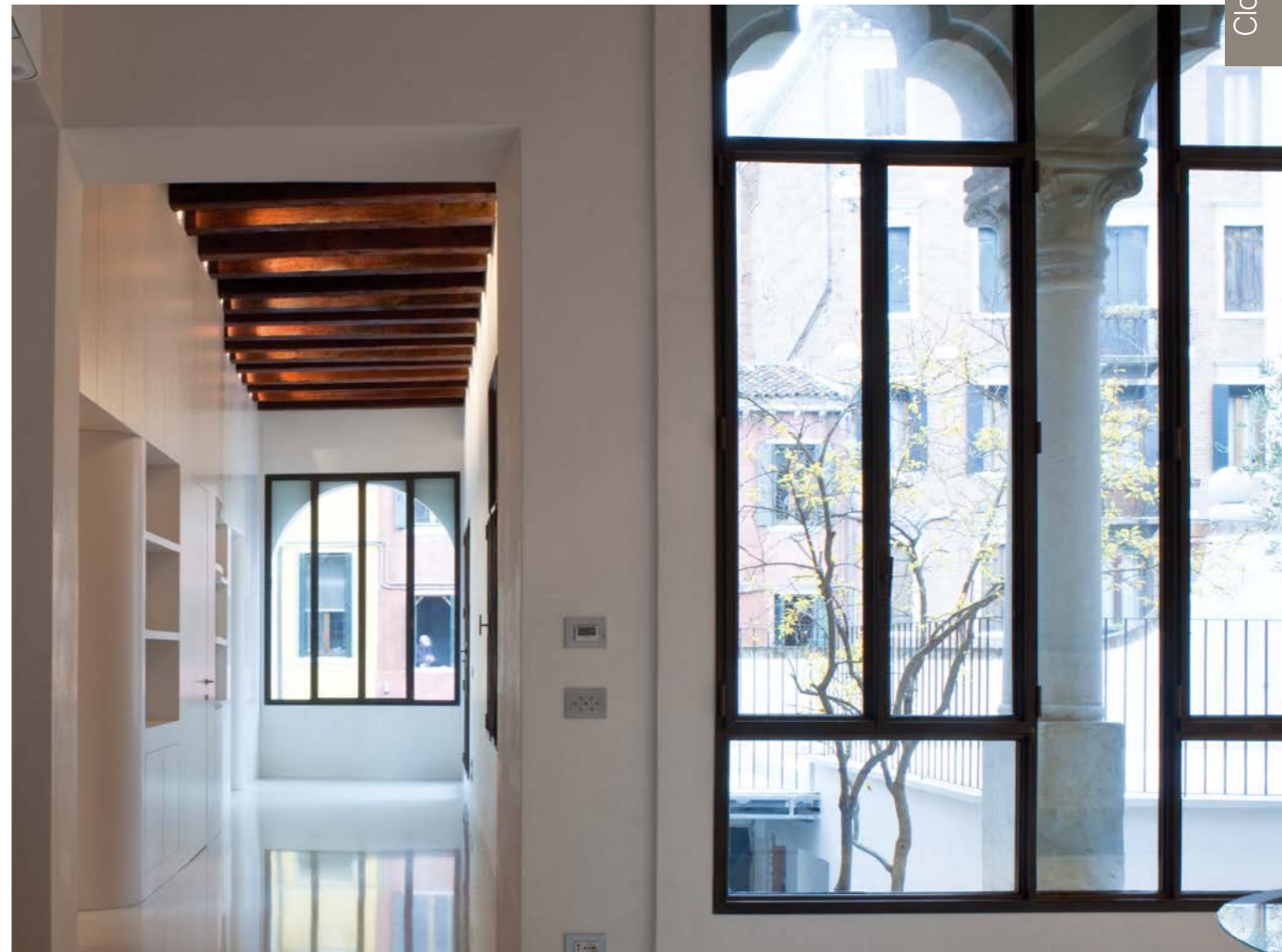


Unique and open, this home captures California's beauty with the large windows and doors that open up to the surroundings. Strong and soft features throughout the home find a balance with the steel's dark profiles and the home's soft natural tones. A prominent feature is the curtain wall which brings natural light to the hall and staircase.



13TH CENTURY MANSION





Location: Venice, Italy
Architect: TA Architettura

Brombal Features: Burnished Brass, Lock-boxes,
Solid Brass Door Panels,
Exterior Wood Clad





This Gothic palace, a private residence in downtown Venice was restored, including the windows and doors. While difficult to build in the tight yet beautiful city of Venice, Brombal was able to provide the freedom to create. Several of the brass windows were made with a wood exterior, and a customized arch. The antique look of burnished brass fit perfectly into the home's updated yet classic design.



COUNTRYSIDE HOME-STUDIO

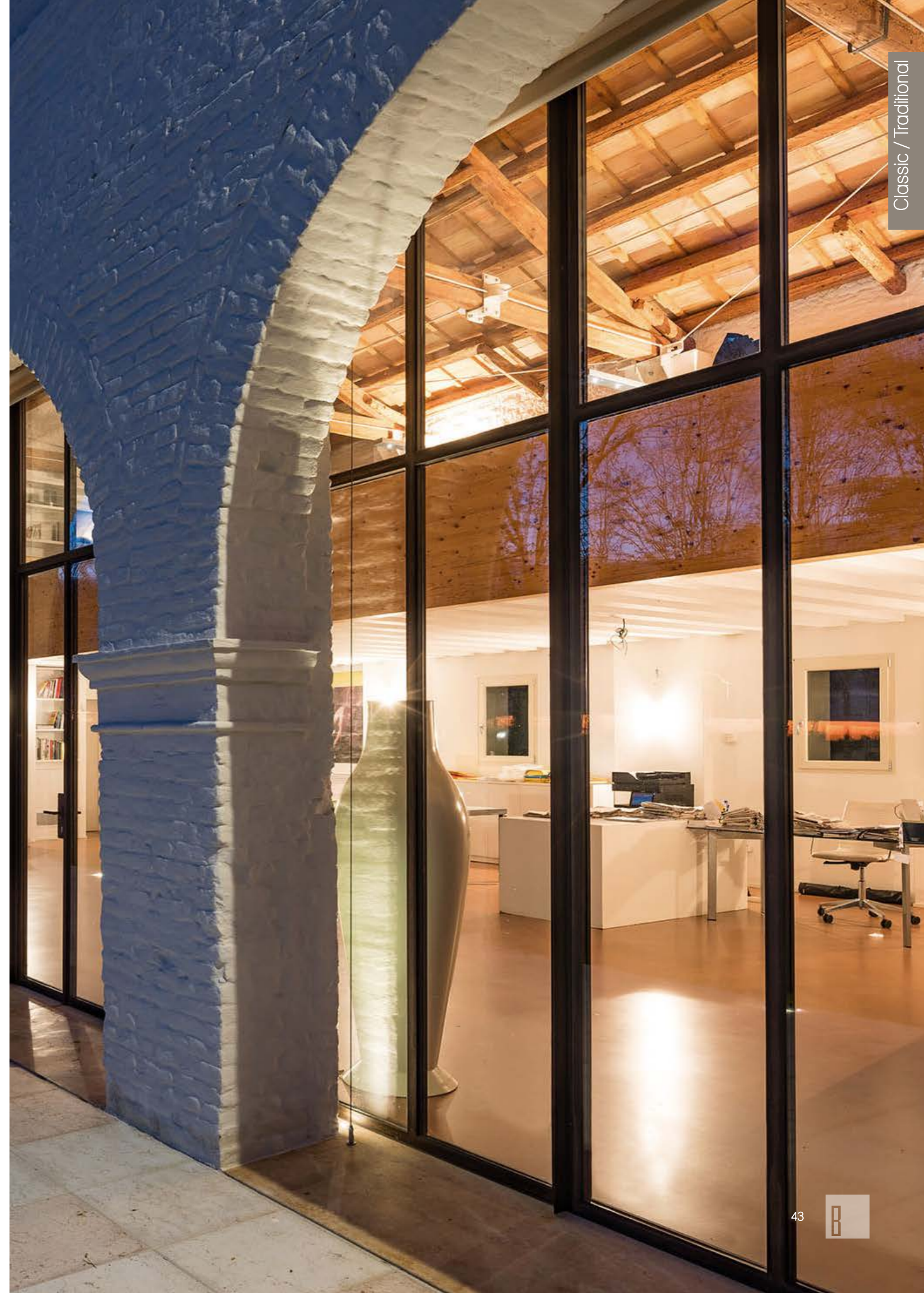




Location: Treviso, Italy
Architect: TA Architettura
Photographers: Paolo Belvedere - Alessandra Chemollo
Brombal Features: CorTen Steel, TDL, Lock-boxes,
Integrated Structural Support Clips



Set in Italy's countryside, a large glass wall connects the building. The balance of old and new is found with Brombal's glass wall with CorTen steel that is set back from the arched colonnades, making the building whole. To cut costs, the client chose to stay away from arched windows. Brombal's solution was to make all the frames inside the arches and to attach the frames to the columns with stiffeners. The project is aesthetically clean, and from the interior and exterior, the frames look suspended rather than attached to the columns.







Location: California, USA
Architect: Andrew Batey
Builder: Carmel Builders
Photographer: Matthew Millman
Dealer: CoorItalia
Brombal Features: Burnished Brass, TDL,
Custom Brass Panels

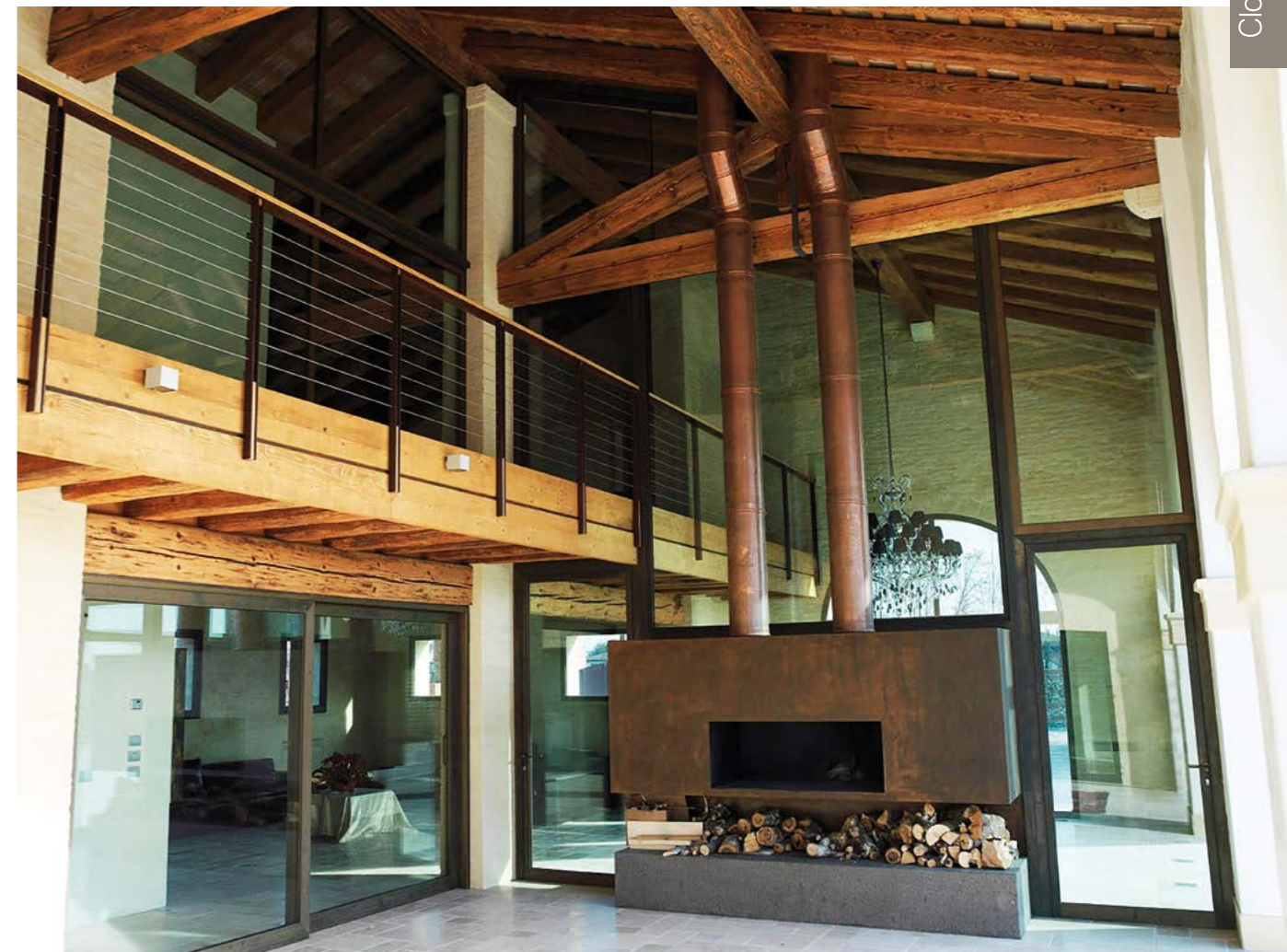




The Santa Lucia Preserve home exudes magnificence with simplicity. The Brombal burnished brass windows and doors add magnificence with the bronze patina, and the simplicity of narrow sightlines. A balance for the homeowners' desire for creativity and intellect resulted in the unique home design and reason for selecting Brombal units.



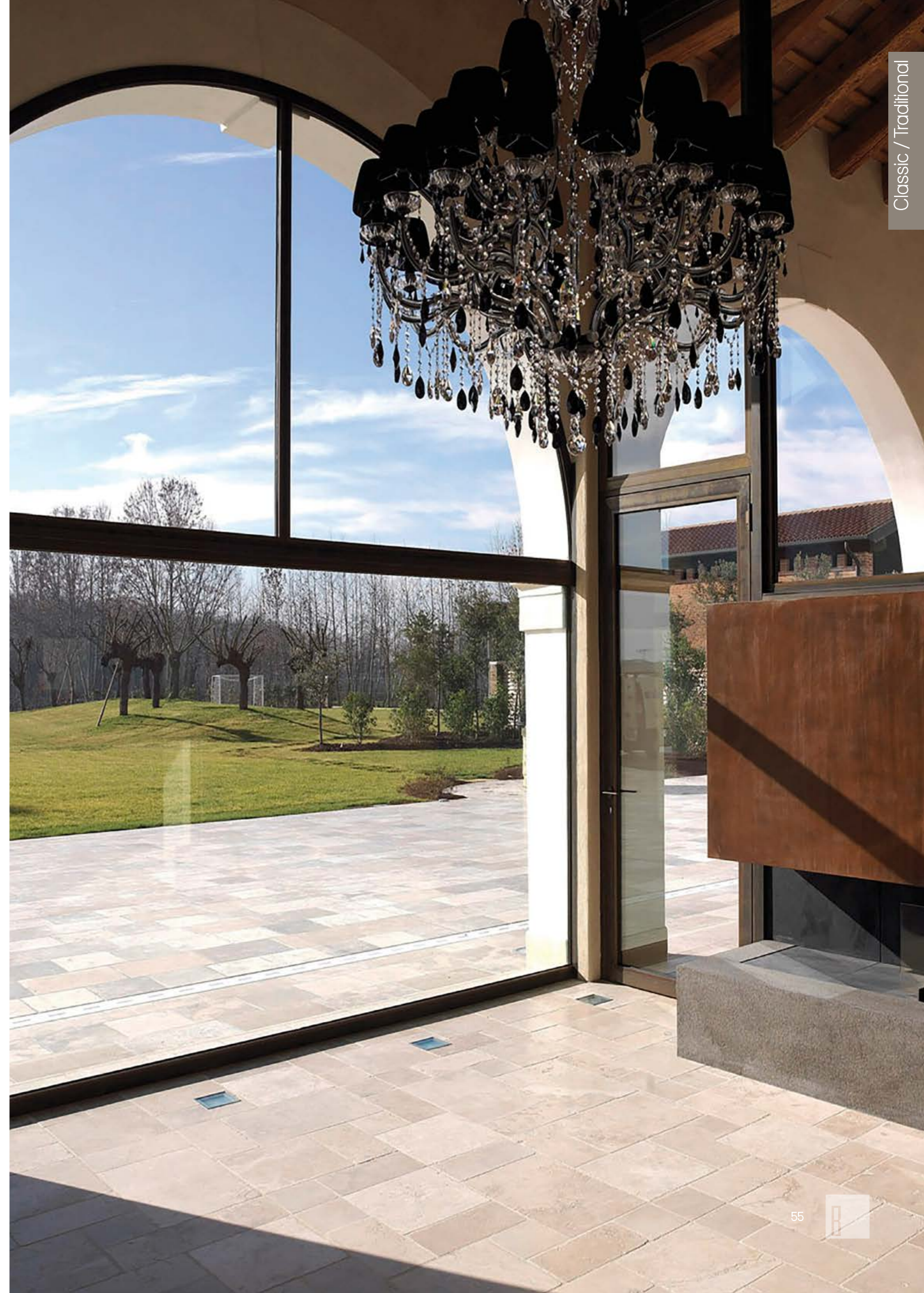




Location: Treviso, Italy
 Architect: Steno Sbrissa
 Photographer: Paolo Belvedere
Brombal Features: Burnished Brass,
 Flush Track, Radius Profiles,
 Custom Notched Frames



The balance of country and luxury is found in this home. The private residence utilizes thermally broken brass with a large arched, fixed window, and a lift and slide with flush track. While difficult to engineer and install big glass around wood beams and columns, Brombal was able to deliver with the freedom to create. The strong profiles make a visual impact with several curved units to soften the design. The color of the burnished brass, natural yet beautiful, fit perfectly into the home's surroundings while adding a touch of elegance.







Location: Virginia, USA

Architect: Dalgliesh Gilpin Paxton Architects

Dealer: Steel Windows & Doors USA

Brombal Features: Burnished Brass, TDL,
Radius Profiles, Lock-boxes,
Kick Panels, Sloped Glazing Beads

Set in Albemarle County's rolling hills, the Midway Farm is a country home that is listed on the National Register of Historic Places. The arched french doors by Brombal were part of the addition to the home, and needed to look like they had been there for over 100 years. The architect worked closely with the Department of Historic Resources, and Brombal created the doors in an antique-like finish along with sloped glazing beads to replicate a classic putty glazed unit. While it was challenging to fabricate french casement double doors with an arch top, Brombal delivered.







Location: Florida, USA

Architect: Thomas Thaddeus Truett

Builder: C.F. Knight

Dealer: Steel Windows & Doors USA

Brombal Features: Burnished Brass, SDL, Radius Profiles







Mountain Modern / Rustic

Location: Wyoming, USA
Architect: JLF Architects
Builder: Big-D Signature
Photographer: Audrey Hall
Brombal Features: CorTen Steel, TDL, Custom Hardware,
Insulated Panels, Triple Pane Glass





Situated in the hills, this mountain home in Wyoming has a rustic feel with a modern touch. The rustic materials are coupled with delicate interiors making CorTen windows and doors a perfect touch. The large walls of glazing incorporate the vast views of the Teton Range, while the thermal break of Brombal ensures thermal efficiency in this extreme mountain climate.



OWL DITCH RANCH



Mountain Modern / Rustic

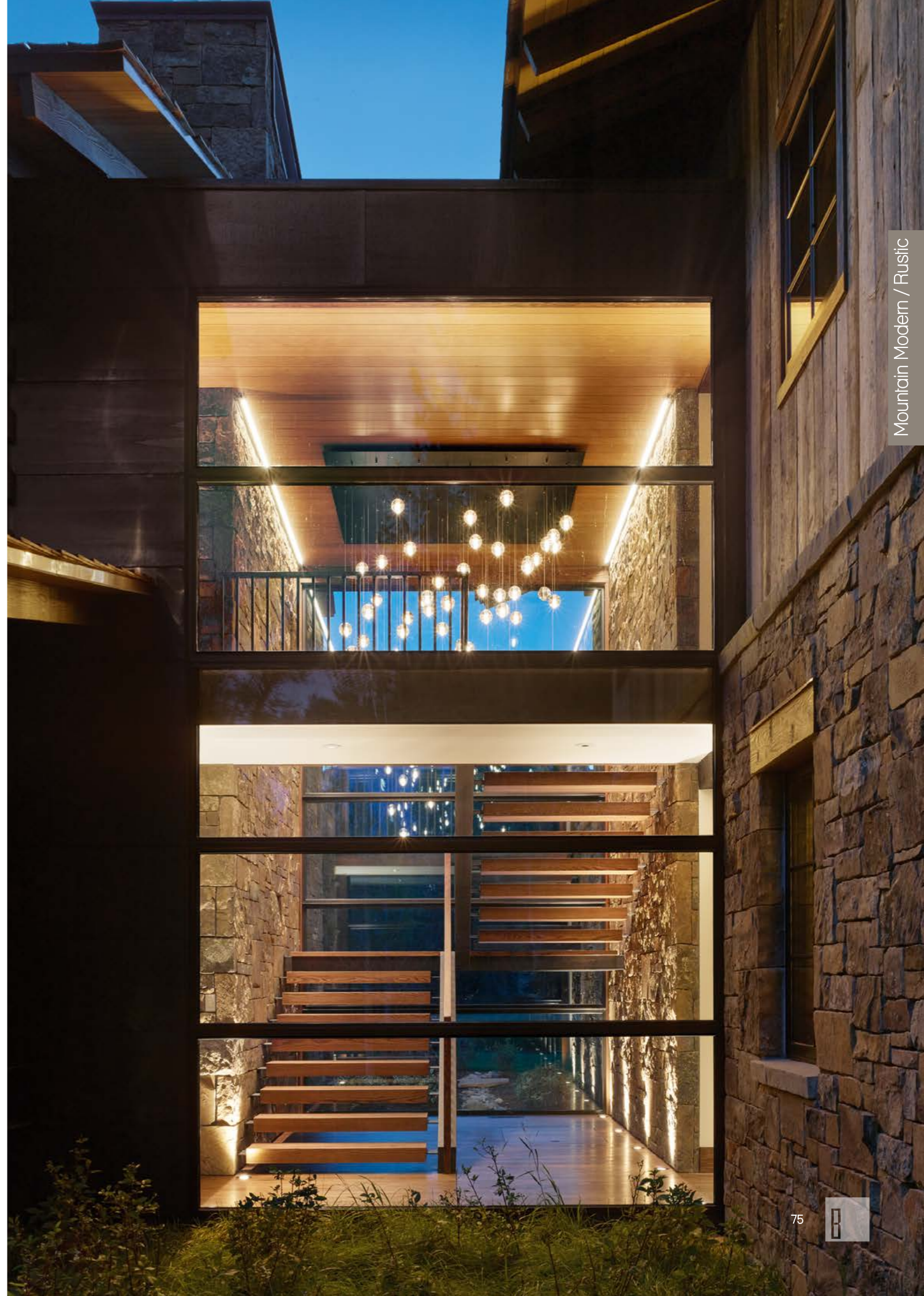


Location: Wyoming, USA
 Architect: Carney Logan Burke
 Builder: Peak Builders
 Photographer: Matthew Millman
 Dealer: Peak Glass
Brombal Features: Galvanized Steel, SDL,
 Triple Pane Glass, Lock-boxes,
 Magnetic Applied Exterior Screens





The clients desired true divided lights, yet the environment called for higher standards in energy efficiency that could only be attained with simulated divided lights. Spacer bars that created shadow bars in the Brombal steel windows and doors duplicated a TDL look with an SDL solution. Triple pane glass was used for maximum energy efficiency, while the narrow sightlines of steel profiles ensured unobstructed views.



KING RESIDENCE



Mountain Modern / Rustic



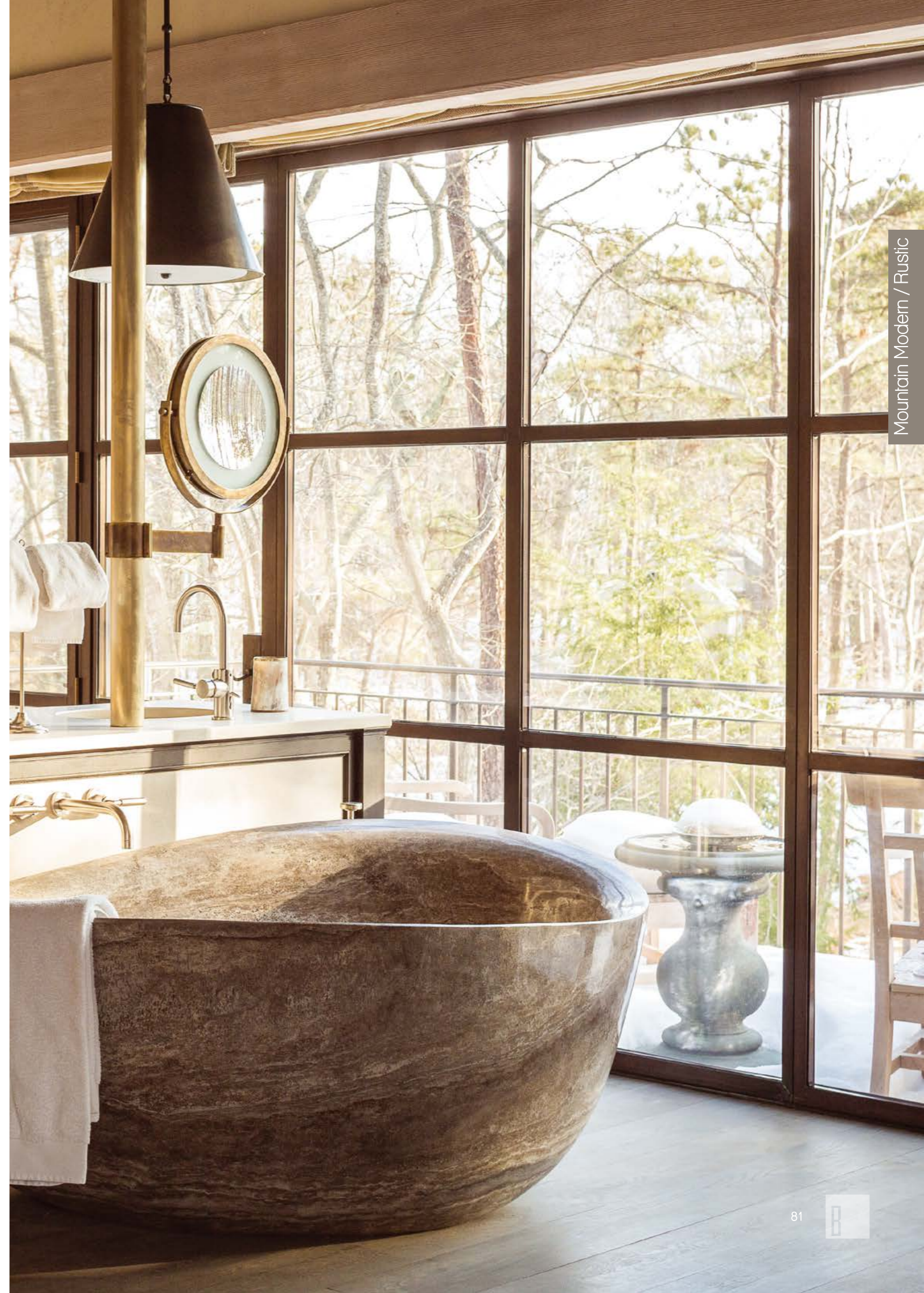
Mountain Modern / Rustic

Location: Maine, USA
Architect: John Saladino
Builder: Bowley Builders
Photographer: Jeff Roberts
Dealer: Steel Windows & Doors USA
Brombal Features: Burnished Brass, TDL,
Custom Screens, Lock-boxes





The design of this Maine residence provides transitional aesthetics to the house while giving a modern flair with rustic accents. Stylish yet cozy throughout, the octagon shaped breakfast room provides a very open feeling while maintaining an intimate setting. Brombal brass true divided lights were chosen to suit the home's overall appeal. Brombal faced a challenge with restoring leaded glass and turning them into insulated glass units for increased energy efficiency, but delivered with the freedom to create. Custom screens were created to blend into the frame system, leaving no details left unturned.



LINN RANCH

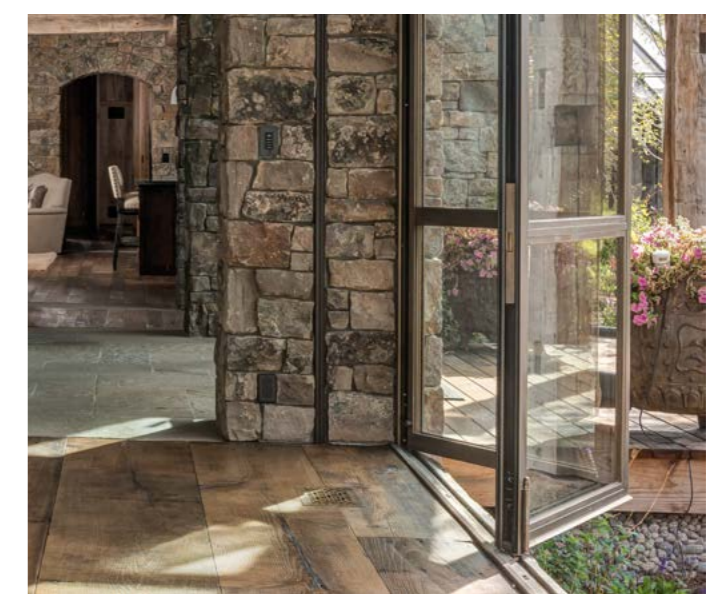




Mountain Modern / Rustic

Location: Wyoming, USA
 Architect: JLF Architects
 Builder: Big-D Signature
 Photographer: Audrey Hall

Brombal Features: Burnished Brass, TDL,
 Custom Hardware,
 Hand Rubbed Burnish,
 Triple Pane Glass,
 Structural All-thread Connectors,
 Sill Pans and Flashing Accessories





This Wyoming mountain hideaway combines strong rustic elements with clean beautiful contemporary lines. The custom patina brass frames perfectly compliment the other natural materials. A pair of large bi-fold doors open up over a meandering stream below. Both the guest house and main house are positioned to capture amazing panoramic views. Triple glazing combined with Brombal's thermal break guarantee a comfortable and cozy interior.



ALBEMARLE BARN RESTORATION



Mountain Modern / Rustic



Location: Virginia, USA

Architect: J. Graham Goldsmith Architects

Builder: Rockpile Construction

Dealer: Steel Windows & Doors USA

Brombal Features: Burnished Brass, SDL

This barn from the 1800's was taken down and moved 20 miles, where the architect and builder transformed it into a home for the clients. Made energy efficient throughout, the barn restoration included burnished brass Brombal doors with high energy performance. The large hinged and fixed units allow ample lighting into the structure, while creating views from one side of the home through to the other overlooking the valley and mountains.



LONE MOUNTAIN HIDEAWAY



Mountain Modern / Rustic



Mountain Modern / Rustic

Location: Montana, USA

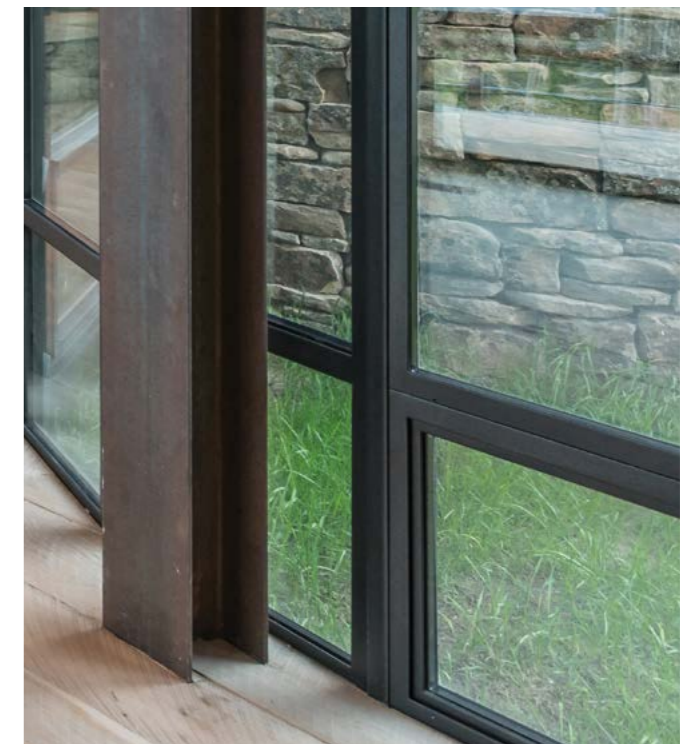
Architect: JLF Architects

Builder: OSM

Photographer: Audrey Hall

Brombal Features: Galvanized Steel, Textured Powder Coat,
Radius Bi-fold, TDL, Triple Pane Glass,
Custom Hardware

Nature and comfort join to create the Lone Mountain Hideaway. The dining area curves around a unique custom radius bi-fold door system to create a wide angle viewing area. Another radius wall compliments the bi-fold and greets guests as they approach the front entry. The windows and doors provide a contrasting combination of luxuriousness inside and a strong connection to the raw wilderness outside.



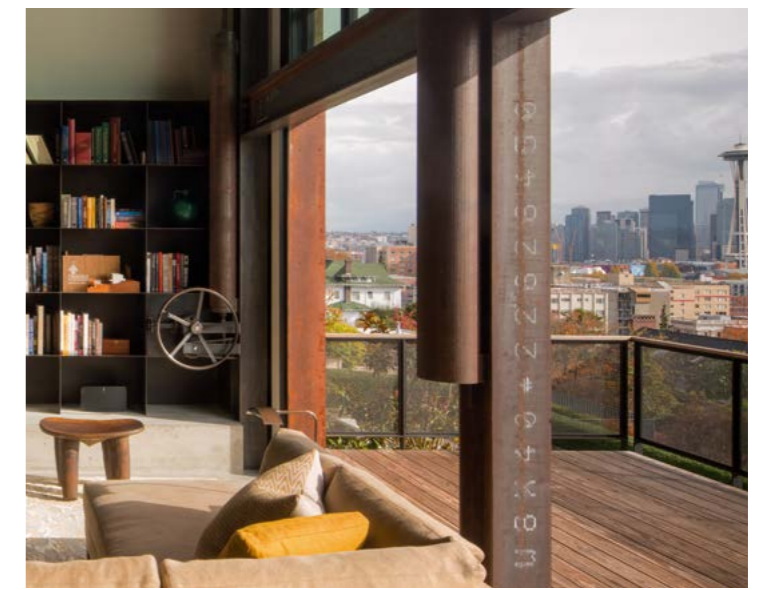
MEG HOME

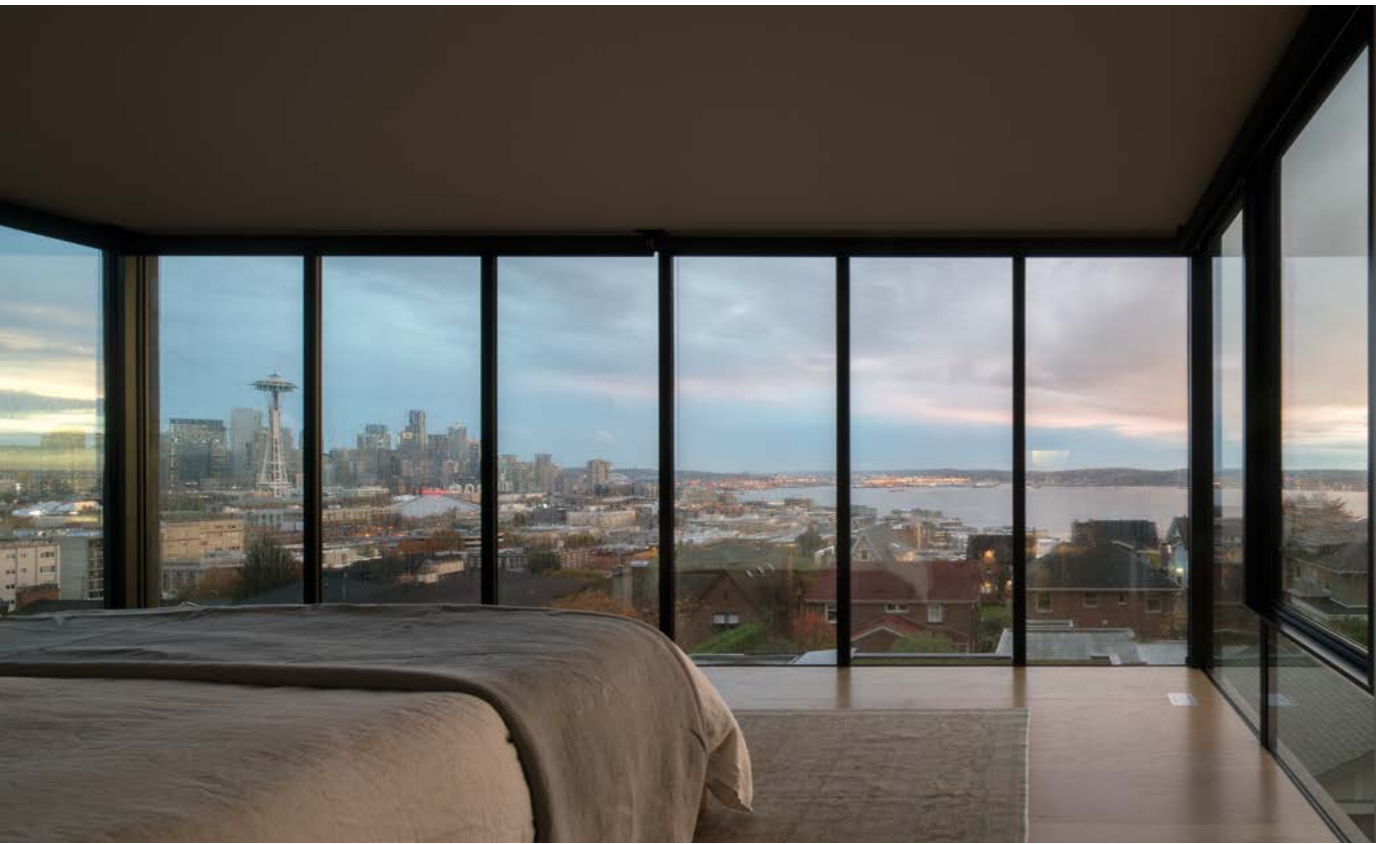


Modern / Contemporary



Location: Washington, USA
 Architect: Olson Kundig
 Builder: Schuchart/Dow
 Photographer: Nic Lehoux
 Dealer: Glacier Window & Door
Brombal Features: Galvanized Steel, Gizmo Wall,
 TDL, Retractable Screens





The architect focused on the context, with a calm street in the front and Seattle's cityscape in the back. Upon entrance, the home opens up to a living area with a 2-story wall to wall operating "gizmo." The unit operates manually by wheel, to open up to the 50' deck overlooking the Puget Sound and city. The master bedroom cantilevers over the deck and takes advantage of the surroundings as well, with glass walls on three sides.



Modern / Contemporary

SARATOGA ROLLING HILLS



Modern / Contemporary



Modern / Contemporary

Location: California, USA

Architect: Louie Leu Architect

Builder: The Conrado Company

Photographer: Frank Perez

Dealer: CoorItalia

Brombal Features: Galvanized Steel,

White Oak Interior Cladding,

TDL, Open Corner / Butt Glazing,

Curtain Wall





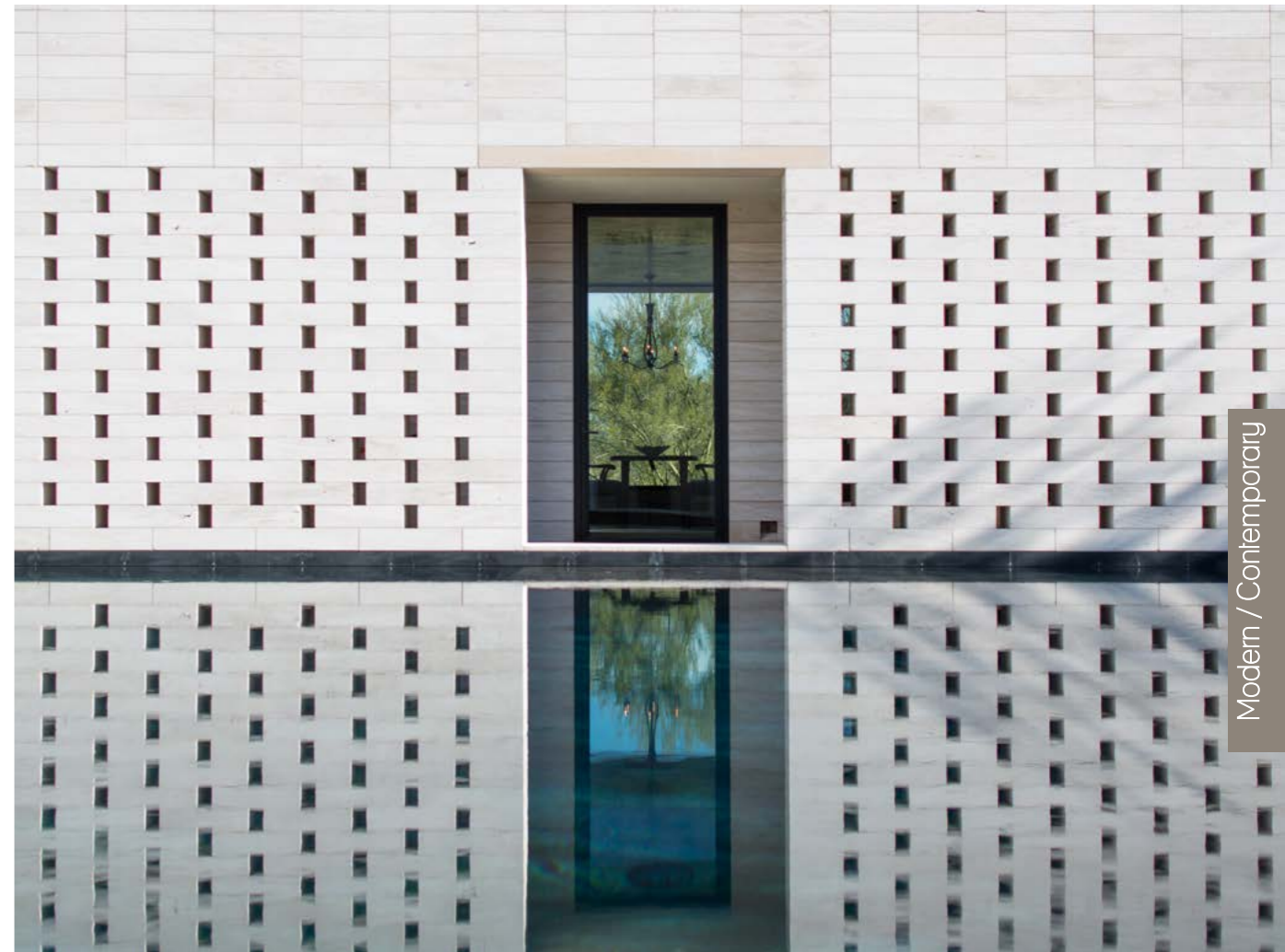
Sustainability and high end design join forces to complete this stylish home. The strength and narrow sightlines of steel combine with the warmth of wood on the inside. Brombal unobstructed corner units were provided to maximize views, while folding doors allowed for maximum access to the outdoors. The design demanded large expanses of glass, open corner assemblies, and large operable doors, which Brombal delivered.



STONE COURT VILLA



Modern / Contemporary



Location: Arizona, USA

Architect: Marwan Al-Sayed

Builder: 180 Degrees

Photographer: Matt Winquist

Dealer: Steel Windows & Doors USA

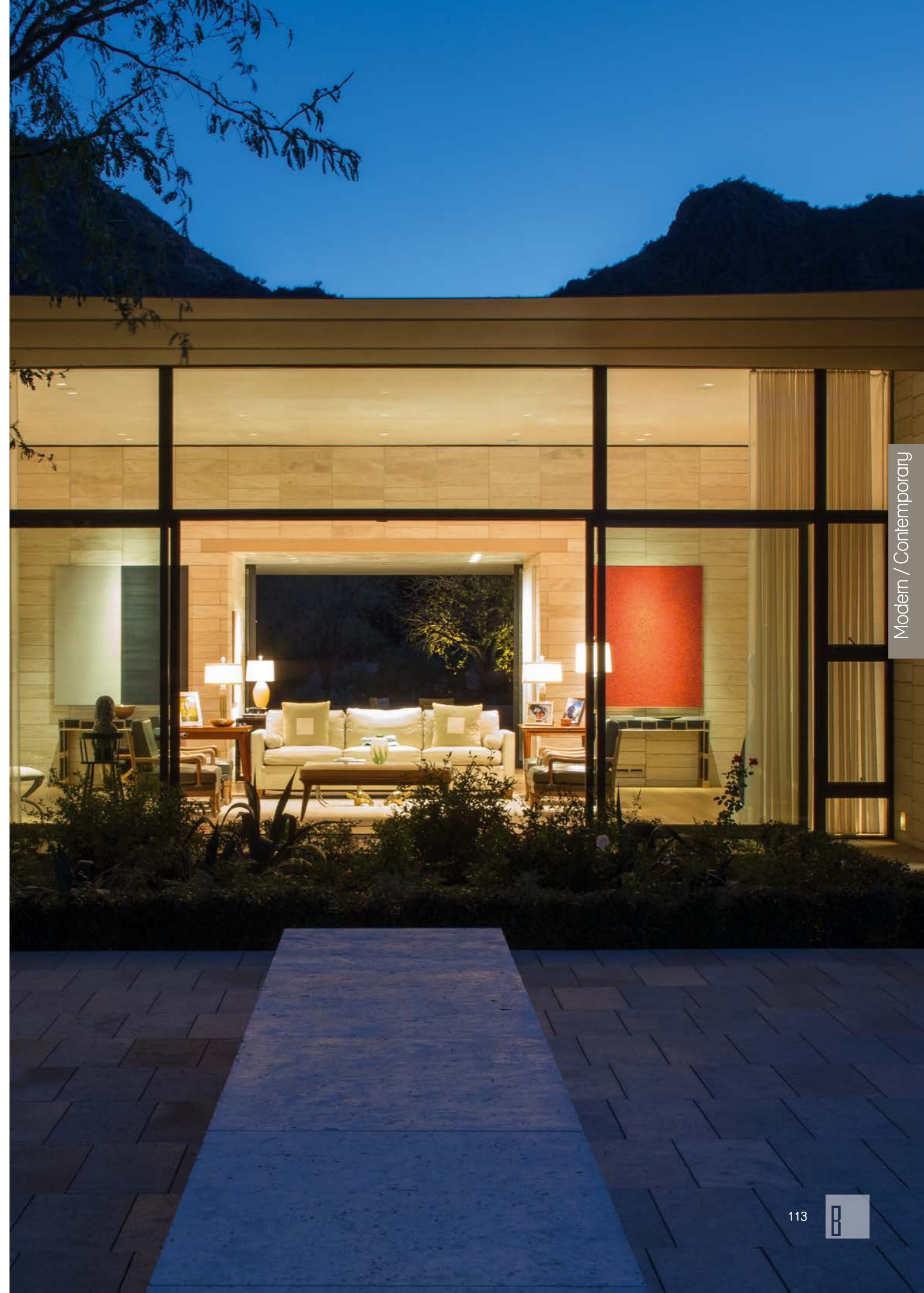
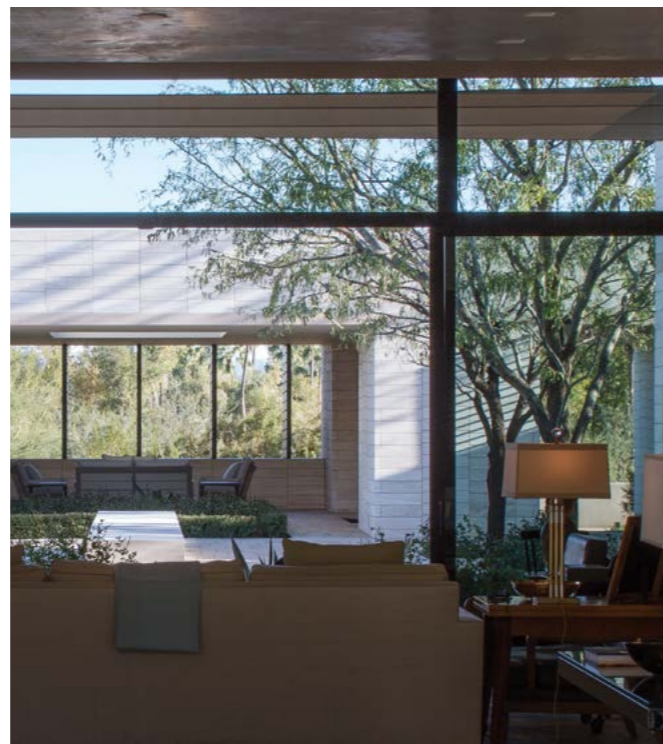
Brombal Features: Galvanized Steel,

External Pocketing Lift Slide Doors





Unobstructed views and ample natural light were provided with the narrow sightlines of Brombal windows and doors. A unique sill and frame were designed to fit the architect's request to have the lift and slide panels slide over the exterior wall, in turn conserving space and allowing complete openness to the outdoors. The main challenge was integrating the frame to allow the panels to pass behind the wall while still engineering the system so weatherproofing and smooth functionality became one in the same. Freedom to create was the result: Brombal provided customizable solutions so the architect's design could become a reality.



GREAT FALLS



Modern / Contemporary



Modern / Contemporary

Location: Virginia, USA
Architect: Wnuk Spurlock
Builder: CarrMichael Construction
Photographer: Steven Paul Whitsitt
Dealer: Steel Windows & Doors USA
Brombal Features: Stainless Steel, Scotch-brite Finish





This contemporary home overlooking the lake is the result of a balance between nature and the homeowners' engaging lifestyle. The renovation included stainless steel units to provide a modern look. Floor to ceiling glass doors allowed for openness and natural light, with the engaging impact of the sleek steel profiles. No compromises were made while the balance was achieved.



VILLA GRITTI



Modern / Contemporary



Modern / Contemporary

Location: Treviso, Italy
Engineer: Ing. Cocco
Photographer: Paolo Belvedere
Brombal Features: Stainless Steel, CorTen Steel,
Custom Notched Frame,
Overhead Glazing





This private new home is stylish throughout with a basement with stainless steel fenestration, and first and second floors with CorTen. The basement includes a wine room with Brombal's thermally broken product to control the temperature. There's also a gym with 316 stainless steel with a full panel in the sauna. An internal partition separates the kitchen and dining room with large glass. The other floors have motorized shutters in CorTen, and full glass and CorTen frames in the garden room including the roof.



Modern / Contemporary

CASTELFRANCO COR-TEN RESIDENCE



Modern / Contemporary



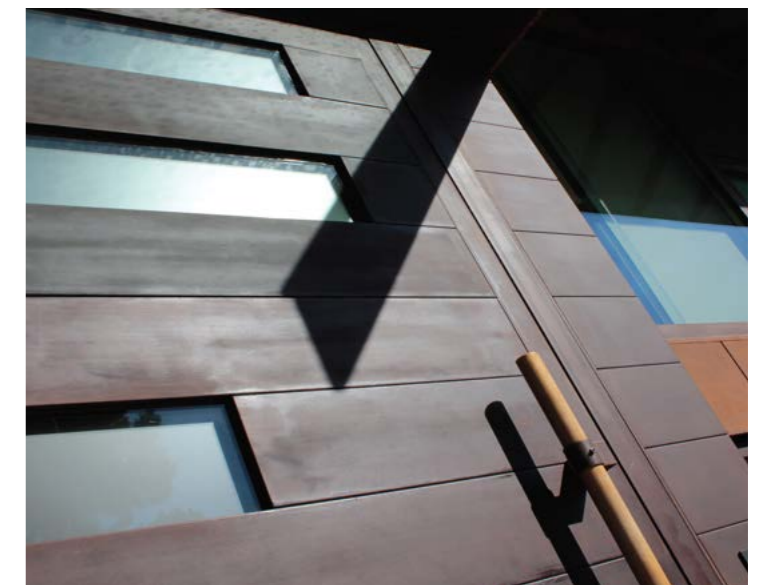
Modern / Contemporary

Location: Treviso, Italy

Architect: Studio Valente Architetti

Photographer: Italian Graphic Design

Brombal Features: CorTen Steel,
Custom Panel/Lite Pivot Door,
Custom Pull Handle,
Trim Accessories





Italian design, performance, and ingenuity speak loudly from this unique residence. The architect had a vision in which the glass and frames play a pivotal role. The CorTen window and door frames contrast from the other building materials, to make a statement. The front door is another impact piece, a 700 lb CorTen pivot door that utilizes insulated panels with horizontal white glass inserts. Despite the attention, there is calmness throughout the home with the garden views that are brought inside with the wall-to-wall glass. The large fixed glass units and lift and slide panels bring vast amounts of natural light in. In addition, Brombal built other CorTen parts of the home including the footbridge and paneled accessories.



VESSEL HOUSE



Modern / Contemporary



Location: Wisconsin, USA
Architect: Vetter Denk
Builder: Builtworks
Photographer: Ryan Hainey
Dealer: Steel Windows & Doors USA
Brombal Features: Galvanized Steel, TDL,
French Pivot Doors,
Corner Assemblies





Located on a lake, the home makes a bold statement yet manages to maintain the area's ambiance with the choice of Brombal windows and doors. The windows and doors are wide and open, creating an unobtrusive look, and the lakeside boathouse features distinctive large pivot doors that connect the inside to the outside with a smooth transition. For the area's climate, Brombal thermally broken windows and doors were the perfect solution for maintaining beauty and function, as well as the energy efficiency required. The windows were hung on heavy duty hinges that were finished to match the galvanized steel powder coated frames, along with concealed multi point hardware to ensure a weather tight seal.



POOL HOUSE



Modern / Contemporary



Location: Treviso, Italy

Architect: Castlunger KarlHeinz. Paolo Fogal.

Photographer: Paolo Belvedere

Brombal Features: Burnished Brass, Radius Bi-fold, Open Corner Lift and Slide, Automation, Exterior Wall Panels, Flush Track, Concealed Hardware





Created to accommodate family and friends by the pool, this poolhouse can be enjoyed year-round due to the thermally broken Brombal windows and doors. Features include: clad brass panels, curved bifold, open corner lift and slides that pocket into the wall, horizontal pivot window, and motorized lift and slide doors. Lines are blurred between the inside and out with Brombal's freedom to create.



CORRALITOS VILLA



Modern / Contemporary



Modern / Contemporary

Location: California, USA

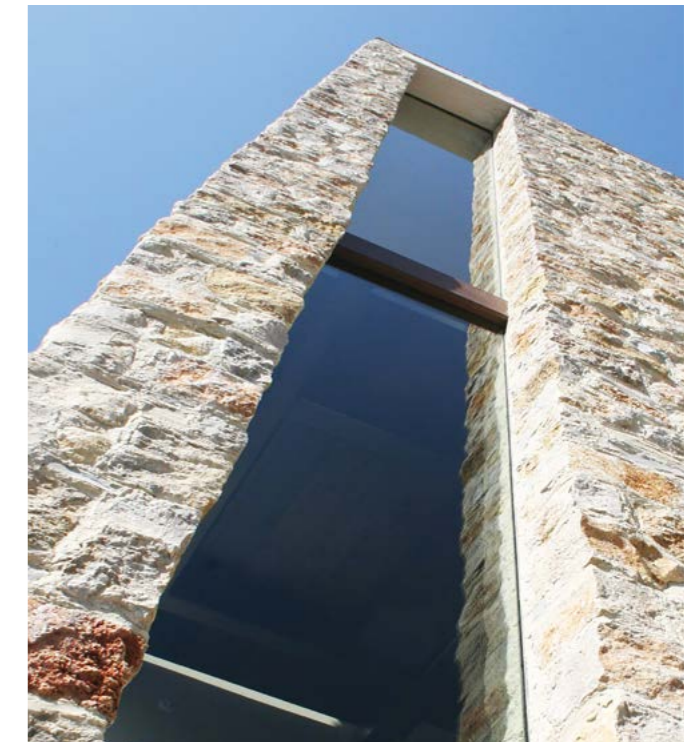
Architect: Louie Leu Architect

Builder: Howerton Construction

Photographer: Marco Ricca

Dealer: CoorItalia

Brombal Features: Flush Track, Pocketing Lift and Slide



With great views of the Monterey Bay, the Brombal windows and doors took full advantage of the scenery. The home is sustainable and energy efficient, with a mix of old and new elements. The home is made of several different color elements, which the architect made to create a feeling of a village when connected together.

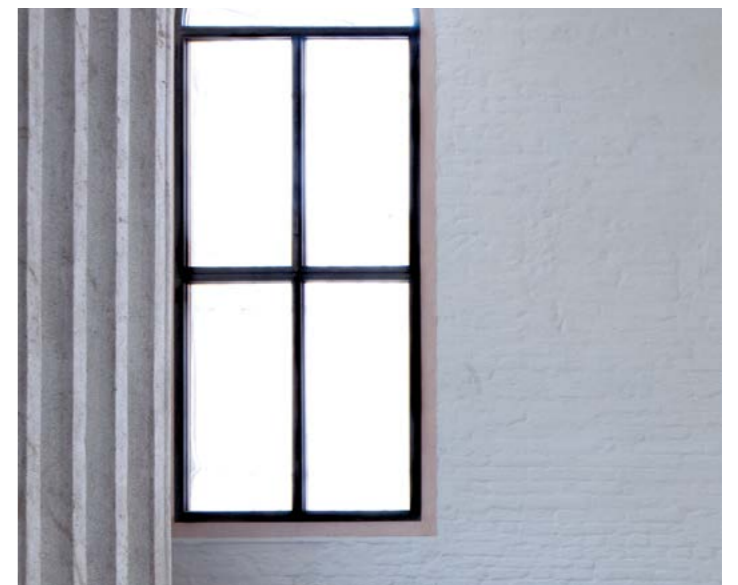
GALLERIE DELL'ACCADEMIA





Location: Venice, Italy
Architect: Tobia Scarpa

Brombal Features: Burnished Brass, TDL, Radius Profiles





A true work of art, the Gallerie dell'Accademia is one of the world's most prestigious museums with previous renovations completed by Carlo Scarpa. The most recent renovation was completed by his son, Tobia Scarpa; this time featuring Brombal luxury metal windows and doors. Working in Venice and installing a large arched unit in an old wall was challenging, but Brombal delivered the promise for freedom to create. Strong profiles with a sleek look are found throughout one of the largest museum complexes in the world, and the burnished brass profiles gave the class that this sophisticated building deserved. The project had specific requirements to meet minimal visual impact, and high functional performance for both thermal and acoustic needs. Brombal delivered both beauty and function, worthy of such a prestigious building.



MOLINO STUCKY HOTEL



NY

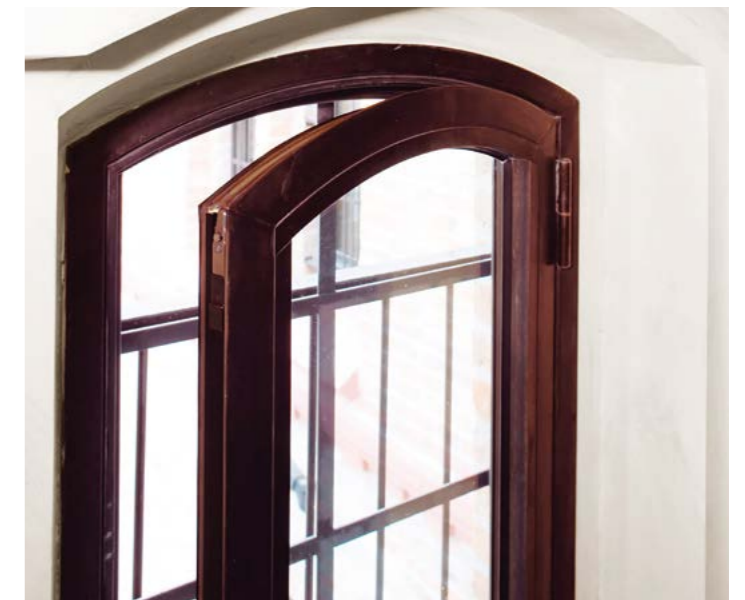
MOLINO STUCKY

G. STUCKY

Commercial



Commercial



Location: Venice, Italy
Architect: Giuseppe Boccanegra
Brombal Features: Burnished Brass, SDL,
Radius and Gothic Profiles



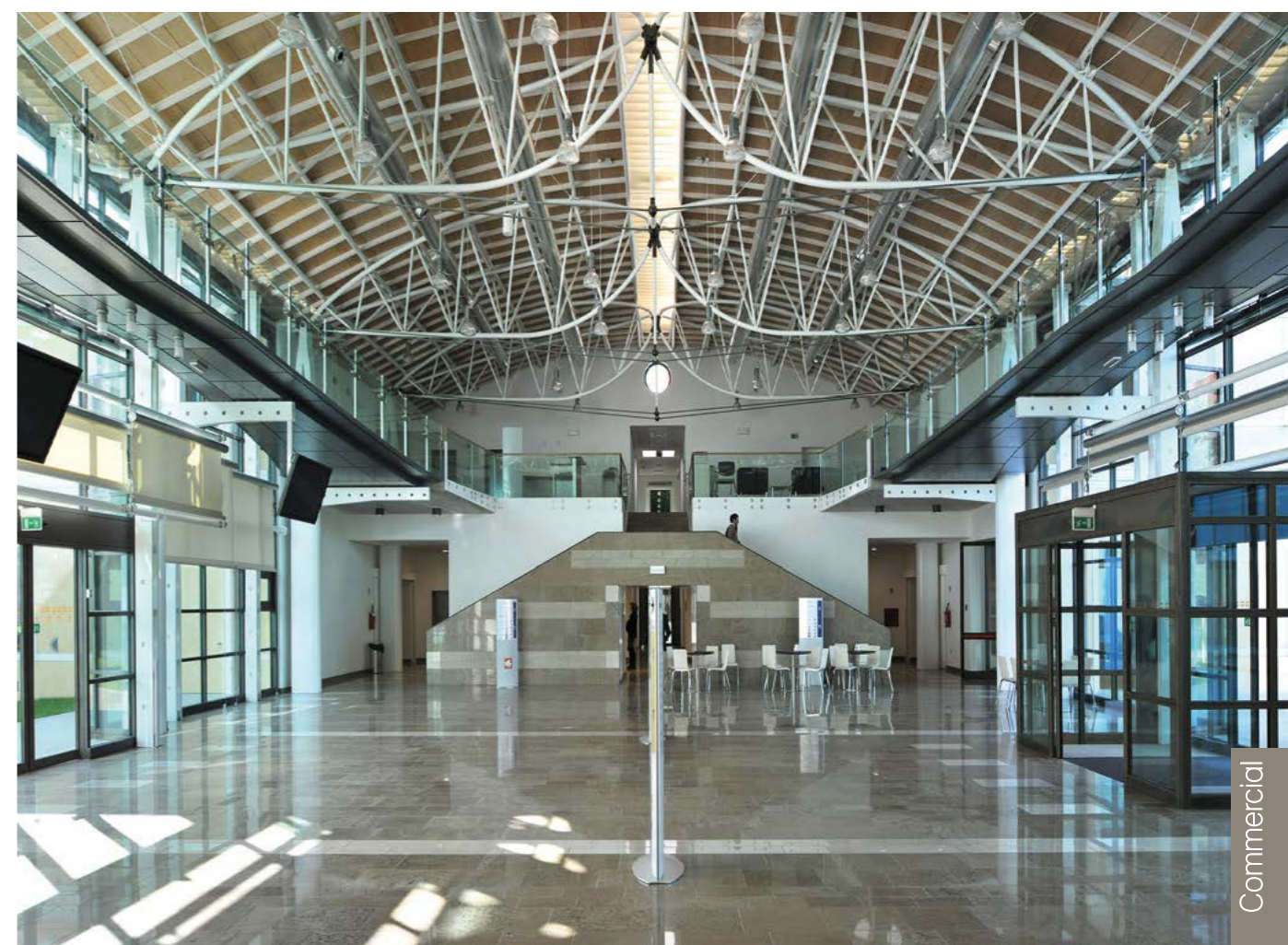
The Molino Stucky Hotel in Venice is a restoration of a building from 1884, and Brombal's biggest project with 2200 windows and doors. The burnished brass fenestration by Brombal was chosen to maintain the look of older metal frames. The brass material was also chosen to reduce problems of deterioration and oxidation due to the close proximity to the water. The need for different unit shapes and hundreds of workers on the job site, made this project challenging, but Brombal delivered by providing the architect and client the freedom to create and combining old world craftsmanship with the latest is fenestration advancements.



TREVISO COUNTY OFFICES



Commercial



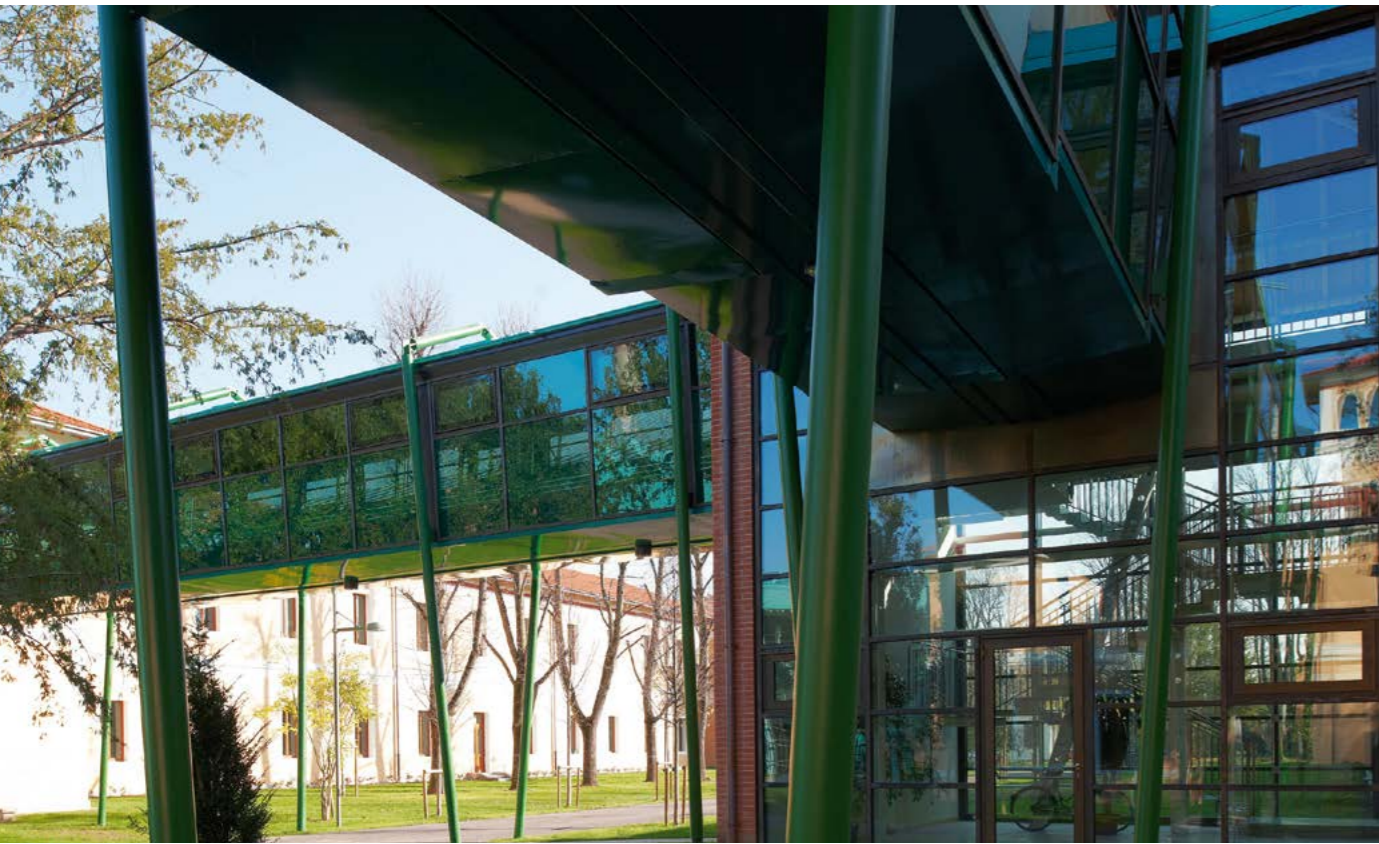
Commercial

Location: Treviso, Italy

Architect: Toni Follina

Brombal Features: Galvanized Steel,
Burnished Brass, TDL,
Curtain Wall, Corner Assemblies,
Horizontal Glazing





The headquarter for Treviso, Italy features a Brombal curtain wall, corner units, large glass units, and bridges. The bimetal materials used by Brombal were chosen for the different benefits offered by each. The outside is of burnished brass for better weather resistance while the inside has powder coated galvanized steel in three different colors - white, green, and dark brown. The large curtain wall is a prominent feature of the building which can be seen from afar.



PALAZZO ONIGO





Location: Treviso, Italy
Architect: Geom. Barbisan, Arch. Vendrame
Arch. Fioretti, Ing. Dalla Cia
Builder: Gazzola Costruzioni
Photographer: Paolo Belvedere
Brombal Features: Galvanized Steel, Radius Profiles



This 14th century building with years of history and renovations behind it still manages to make a grand statement. Originally a palace owned by a noble family, today it is the site of one of Northeast Italy's top stores H&M. The store received a look that is just as stylish as its products with the latest renovation in 2012. The downtown Treviso restoration included powder coated galvanized steel, arched windows and doors with large glass.



Commercial





Commercial

Location: California, USA
Architect: Backen, Gillam, & Kroeger Architects
Builder: Ledcor Construction
Dealer: Cooritalia
Brombal Features: Galvanized Steel, SDL,
Lock-boxes, Kick Panels,
Door Closures, Radius Profiles,
Custom Wood Door Panels

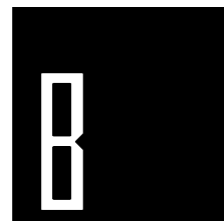




Classy yet literally cool, the Lokoya Winery has large galvanized steel doors by Brombal. The simulated divided lights increase the energy performance, while the narrow sightlines hold large panes of glass. The wine coolers with Brombal doors keep the cold air in and the warm air out.



Commercial



BROMBAL

LUXURY METAL WINDOWS AND DOORS

Discover freedom to create.

EUROPE

www.brombal.it
info@brombal.it
+39 0423 566189

NORTH AMERICA

www.brombalusa.com
sales@brombalusa.com
+1 855 287 2258

OCEANIA

www.brombaloceania.com
info@brombaloceania.com
+64 21 661016



BROMBAL